

ATM RO Metal Construction Expands Construction Workforce Services Across Western Europe



Ramnicu Valcea, Valcea Jul 3, 2026 ([IssueWire.com](https://www.IssueWire.com)) - **ATM RO Metal Construction**, today announced the expansion of its construction services across Western Europe, providing skilled workforce solutions for commercial, industrial, residential, and infrastructure projects.

With increasing demand for experienced construction professionals throughout Europe, ATM RO Metal

Construction is strengthening its capacity to support general contractors, developers, engineering firms, and industrial clients in countries including Norway, Germany, the Netherlands, Belgium, France, Denmark, and Sweden.

The company supplies qualified construction teams capable of integrating into projects of various sizes, helping clients maintain schedules while delivering quality workmanship, professionalism, and compliance with European construction standards.

"Our goal is to become a trusted long-term construction partner for companies across Western Europe," said a spokesperson for ATM RO Metal Construction. "We understand the importance of dependable skilled labor, clear communication, and consistent execution. Our teams are committed to helping clients complete projects safely, efficiently, and to a high standard."

ATM RO Metal Construction provides support across a broad range of construction sectors, including:

- Steel fitting
- Cladding
- Glulam structures
- Commercial buildings
- Industrial facilities
- Residential developments
- Infrastructure and civil engineering projects
- Structural construction

By combining an experienced Romanian workforce with flexible project deployment, ATM RO Metal Construction enables construction companies throughout Western Europe to address labor shortages without compromising quality or productivity.

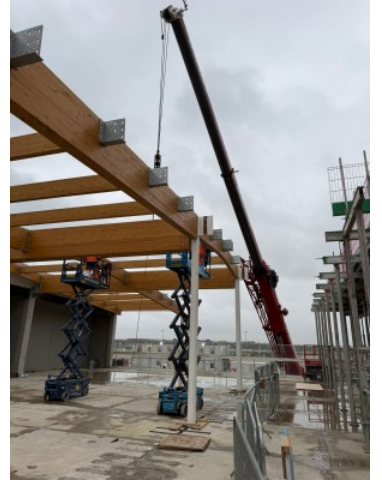
As the European construction market continues to invest in new residential, commercial, industrial, and public infrastructure developments, ATM RO Metal Construction is actively seeking partnerships with contractors and project owners requiring reliable subcontracting and workforce support.

Companies interested in learning more about ATM RO Metal Construction's services or discussing upcoming projects are encouraged to visit <https://atmconstruction.eu> or contact the company directly at this number: +40750826561

About ATM RO Metal Construction

ATM RO Metal Construction is a Romanian construction company providing skilled workforce and construction services for commercial, residential, industrial, and infrastructure projects throughout Europe. The company is committed to delivering reliable project support, quality workmanship, and long-term partnerships built on professionalism, safety, and trust.





Media Contact

ATM RO Metal Construction

*****@atmconstruction.eu

+40750826561

<https://atmconstruction.eu/>

Source : ATM RO 2023 SRL

[See on IssueWire](#)