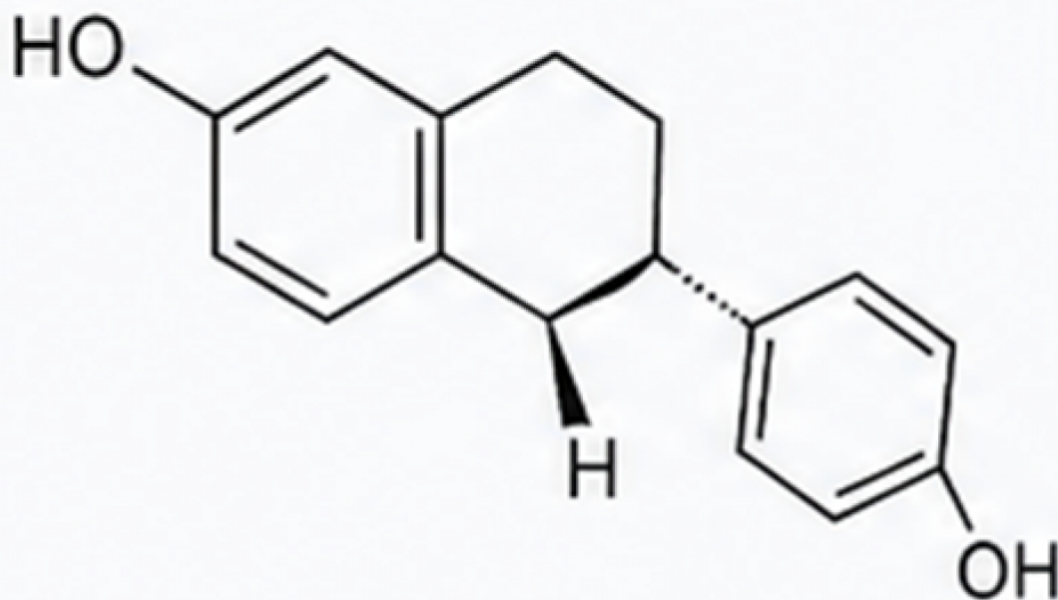


Why a 99% Purity HPLC-tested S-equol Powder Supplier is Essential for Women's Health Formulations

2

S-equol Powder



City of Industry, California Jun 9, 2026 ([IssueWire.com](https://www.IssueWire.com)) - When formulating products for midlife women experiencing hot flashes, sleep disruptions, and mood fluctuations, developers encounter a unique set of formulation demands. A brand manager analyzing recent product evaluations might notice that subtle changes in a raw ingredient can cause unexpected shifts in a capsule's appearance or alter how well it dissolves in a functional beverage. In the specialized field of women's health ingredients, Fermentation offer notable metabolic benefits, but they also bring significant technical challenges regarding purity and structural consistency. For manufacturers working to create reliable health solutions, partnering with an expert [99% Purity HPLC-tested S-equol Powder Supplier](#) is a necessary step to ensure consumer safety and product performance.

Navigating the Sensitivity and Specificity of Female Wellness Formulations

A major technical challenge in this sector is managing the high sensitivity of targeted female health applications. Consumers seeking relief from menopausal discomfort are highly cautious about safety, making raw material purity a critical factor in building brand loyalty. Equol exists in two distinct structural configurations: the S-form and the R-form. While the R-form shows alternative receptor tendencies, only the S-enantiomer fits smoothly into human estrogen receptors to provide targeted, gentle physiological support. Utilizing a high-purity, structurally precise version of this bio-active compound allows brands to deliver dependable results without exposing consumers to unwanted structural variations. For instance, Medchem, a specialized manufacturer under Essence Medchem Co., Ltd., focuses closely on isolating this active form to prevent the biological unpredictability common in lower-purity or mixed-isomer ingredients.

The Technical Threshold: Why 99% HPLC Purity is Mandatory for Stability

Achieving a 99% purity profile requires precise molecular control. In standard manufacturing, minor variations can leave behind trace processing residues that alter the color, smell, and stability of the final batch. By securing a verified 99% purity HPLC-tested S-equol powder, product developers can ensure that each milligram consists entirely of the active compound, eliminating impurities that might interfere with other active ingredients. Medchem utilizes advanced high-performance liquid chromatography testing to analyze every production batch. This testing looks beyond basic appearance to confirm structural identity and verify that the active molecule matches established benchmarks, protecting product integrity before the material ever reaches a blending facility.

This level of analytical clarity is essential for manufacturing stability. Raw materials with inconsistent purity often show varying physical properties, such as unexpected moisture absorption or clumping under compression pressure. In large-scale production, these inconsistencies can lead to issues like uneven capsule filling, cracked tablets, or sediment formation in ready-to-drink formulations. Using a reliable 99% purity HPLC-tested S-equol powder allows engineers to maintain uniform flowability and dissolution rates across all production runs. This predictable material behavior helps manufacturing facilities operate efficiently, minimizing downtime caused by sticky powders or unexpected chemical interactions during processing.

Compliance and Trust: Transitioning from Ingredient Vendor to Strategic Partner

As global regulatory frameworks tighten, the relationship between component suppliers and wellness brands has shifted from a simple purchasing arrangement to a deeply integrated compliance partnership. Modern brand documentation must meet rigorous standards, requiring comprehensive transparency for every single ingredient. A trusted partner like [Essence Medchem Co., Ltd.](#) supports brand compliance by providing detailed certificates of analysis, high-resolution chromatography profiles, and complete material safety sheets. This thorough documentation gives brand owners the precise data required to satisfy regulatory reviews by organizations like the FDA or EFSA, protecting the business from the serious financial and reputational risks associated with product recalls or labeling disputes.

Furthermore, maintaining traceability requires a certified manufacturing infrastructure. Medchem operates production facilities governed by internationally recognized quality systems, including ISO 9001, ISO 22000, and FSSC 22000, along with Halal and Kosher certifications. These comprehensive validation standards ensure that the raw materials are handled under strict sanitary and operational protocols from initial isolation through final packaging. By working with a supplier that maintains these verified international standards, brands can confidently assure their consumers that every product on the shelf is safe, consistent, and fully traceable back to its origin.

Synergistic Solutions and Lifecycle Support for Growing Health Brands

Beyond basic raw material supply, modern product development benefits greatly from collaborative technical support. Consumer preferences show a growing interest in multi-functional health solutions, prompting formulators to combine S-equol with other supportive components like vitamin D3, vitamin K2, and various specialized forms of magnesium. Medchem leverages its deep ingredient portfolio—which includes specialized options like magnesium glycinate, magnesium malate, and magnesium l-threonate—to offer valuable technical guidance on component compatibility and blending characteristics. This cooperative approach helps formulators understand how different cellular nutrients interact, preventing problems like nutrient degradation and helping brands create balanced, stable mixtures for complex wellness products.

Logistical flexibility is another critical factor in successful product development. Moving an initial concept from small-scale laboratory trials up to commercial production requires an adaptable supply chain. Essence Medchem Co., Ltd. addresses these operational needs by maintaining independent testing laboratories alongside dedicated storage facilities within the United States. This infrastructure allows the company to support brands through early-stage laboratory evaluations while providing the scale necessary to fulfill large commercial orders. By positioning inventory closer to major regional markets, the company reduces international shipping delays and helps brands optimize their inventory levels, allowing them to respond efficiently to shifting market demands without carrying excessive warehouse overhead.

Ultimately, standing out in the competitive women's wellness sector depends on a brand's commitment to verifiable quality and clean formulation design. When product developers select a high-quality HPLC-tested S-equol powder, they are choosing to build their products on a foundation of measurable safety and clear analytical data. This disciplined focus on ingredient purity and reliable sourcing helps wellness brands deliver stable, reliable products that earn long-term consumer trust.

To explore detailed technical specifications, regulatory documentation, or to request analytical samples for product development, please visit the official resource center at <https://www.maxmedchem.com/>



Media Contact

Essence Medchem Co., Ltd.

*****@maxmedchem.com

17910 E Ajax Circle, City of Industry, CA 91748

<https://www.maxmedchem.com/>

Source : Essence Medchem Co., Ltd.

[See on IssueWire](#)