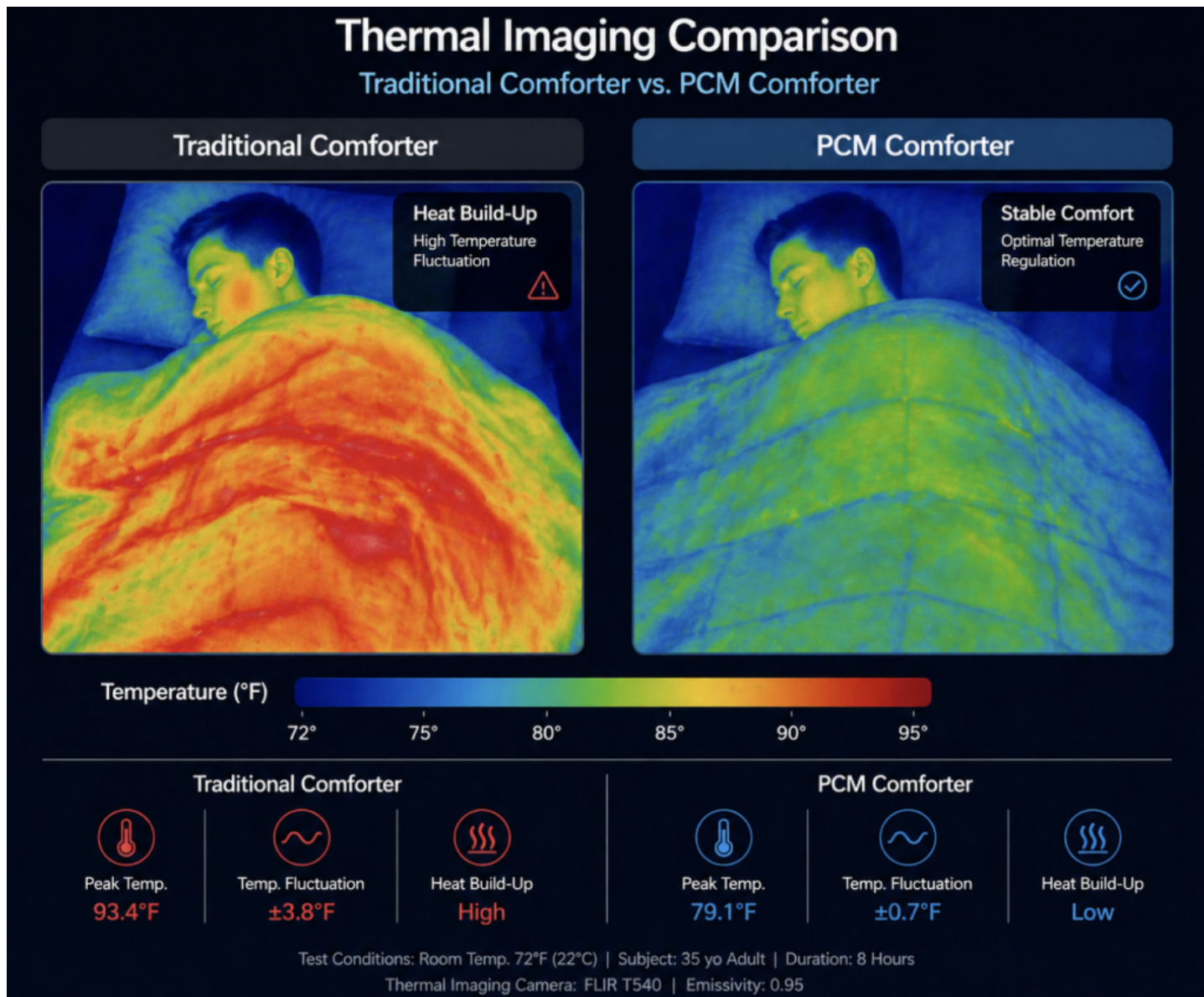


PCM Comforters vs. Down-Alternative: Insights from China

Best Down-Alternative Cotton All-Season Comforters Supplier



Qingdao, Shandong Jun 4, 2026 (Issuewire.com) - The evolution of modern bedding has moved beyond simple insulation toward the sophisticated management of the sleep microclimate. Global consumers now seek bedding solutions that provide consistent comfort across fluctuating seasonal temperatures without the bulk of traditional materials. In this competitive landscape, identifying a [China Best Down-Alternative Cotton All-Season Comforters Supplier](#) becomes essential for international brands looking to balance innovation with manufacturing excellence. Companies like Becozy (Qingdao Beikeqi Home Products Co., Ltd.) demonstrate how advanced material science can redefine the standard for all-season comfort. By comparing Phase Change Material (PCM) technology with high-performance down-alternative fibers, industry experts can better understand the shifting dynamics of "intelligent" sleep environments. This technical analysis explores how these materials interact with human biology to create a restorative rest experience.

The Thermodynamics of Sleep: Active Temperature Regulation vs. Passive Insulation

Effective sleep depends largely on the body's ability to maintain a stable core temperature during the various stages of the circadian rhythm. Traditional comforters typically rely on passive insulation, where the filling material traps body heat within a static air layer. While this approach provides warmth, it often leads to overheating as the night progresses, causing users to wake up feeling "stuffy" or sweaty. Consequently, the demand for dynamic thermal management has led to the rise of active technologies like Phase Change Materials.

Manufacturers such as Becozy address these challenges by diversifying their product lines to include both active and passive thermal systems. By functioning as a high-tech production hub, the firm enables retailers to provide choices that suit specific regional climates. For example, in areas with extreme seasonal shifts, a comforter that actively modulates heat can prevent the common cycle of freezing at midnight and sweating by dawn. Understanding the underlying physics of these materials allows procurement specialists to build more effective and scientifically backed product portfolios.

Phase Change Material (PCM): The Science of Intelligent Thermal Buffering

Phase Change Material represents a significant breakthrough in "black technology" for the textile industry. This material functions like a rechargeable thermal battery that reacts to the surrounding environment. When the temperature under the quilt rises above a comfortable threshold, [the PCM molecules](#) absorb the excess heat and store it by changing their physical state. Conversely, when the ambient temperature drops, the stored energy is released back to the sleeper. This intelligent feedback loop maintains a constant, comfortable temperature range throughout the night.

The brand known as cozytact integrates these PCM layers into quilt cores to achieve a "dynamic equilibrium." This technology is particularly beneficial for couples with different metabolic rates or for individuals prone to night sweats. Because the PCM reacts to local heat spikes, it stabilizes the sleep surface before the user becomes uncomfortable. Furthermore, these materials are non-toxic, recyclable, and free from formaldehyde, making them a safe choice for families with children or elderly members. This shift toward "intelligent" bedding reflects a broader trend of using chemistry and physics to improve human wellness.

High-Loft Down-Alternatives: Matching Natural Luxury with Synthetic Precision

While PCM focuses on regulation, high-quality down-alternative fibers prioritize the tactile luxury and fluffiness associated with premium goose down. Modern down-alternative comforters utilize modified "hot cotton" and specialized polyester fibers to replicate the three-dimensional structure of natural down clusters. These synthetic fibers possess excellent resilience and high-loft characteristics, allowing the comforter to trap a significant amount of insulating air without the ethical concerns or allergen risks of animal products.

Becozy (Qingdao Beikeqi Home Products Co., Ltd.) excels in producing these high-warmth-to-weight ratio fillings that offer a "cloud-like" wrapping feeling. Unlike natural down, which can clump or develop odors over time, high-performance synthetic fibers remain odorless and stable. These materials provide a cost-effective way for brands to offer premium-tier comfort at a fraction of the price of natural alternatives. For distributors, the ability to market a "hypoallergenic" and "cruelty-free" luxury product provides a significant competitive edge in the conscious consumer market.

The Weightless Advantage: PCM's 1/2 Weight Density Breakthrough

One of the most notable physical differences between these technologies is the resulting weight of the finished product. Traditional high-warmth comforters often require significant mass to provide adequate insulation, which can place physical pressure on the sleeper. However, Becozy's PCM temperature control cores utilize a light and thin filling layer that achieves superior thermal stability with only half the weight of a traditional quilt. This reduction in density significantly improves the ease of turning over and moving during sleep.

The lightweight nature of these comforters reduces the "suffocation" feeling that many users experience with heavy winter blankets. By minimizing the mechanical load on the body, the PCM quilt core facilitates a more relaxed musculoskeletal state. This weightless advantage does not compromise warmth; instead, it replaces physical mass with thermal efficiency. As modern interior design leans toward minimalism, the demand for thin, high-performance bedding that looks sleek and sophisticated continues to grow globally.

Fabric Innovation: The Integration of Jinammonia and High-Density Breathability

The effectiveness of any comforter core is largely determined by the fabric that encapsulates it. Advanced suppliers utilize Jinammonia and other high-density fabrics to enhance moisture absorption and skin-friendliness. Jinammonia, in particular, offers a silky touch and excellent moisture-wicking properties, which complement the heat-regulating functions of the internal PCM. These fabrics are engineered to expel sweat and humidity quickly, keeping the bed environment dry and non-sticky.

Becozy employs precision weaving to ensure these fabrics remain breathable yet durable enough to prevent fiber leakage. This high-density construction also provides a barrier against dust mites and allergens, which is crucial for sensitive skin. The combination of advanced textiles and technical cores allows the manufacturer to create a product that feels "premium" from the very first touch. By prioritizing the tactile experience, the brand known as cozytact ensures that their technical innovations are matched by aesthetic and sensory excellence.

Maintenance and Durability: Partitioned Quilting vs. Traditional Stitching

Durability is a key metric for all-season bedding, especially for products that require frequent washing. To prevent the internal filling from shifting or clumping, Becozy utilizes a partitioned quilting process. This technique involves stitching the PCM layer and the filling cotton into specific zones, ensuring that the thermal protection remains uniform across the entire surface. Even after multiple machine washes, the internal structure remains stable, preventing the "cold spots" that often occur in inferior quilts.

Furthermore, the three-dimensional edging reinforcement used by Qingdao Beikeqi Home Products Co., Ltd. enhances both the durability and the aesthetic appeal of the comforter. These fine, smooth stitches prevent fraying and ensure the product can withstand years of daily use. For international partners, this level of industrial execution reduces the risk of quality complaints and returns. Investing in a scientifically quilted product ensures that the end-user receives a consistent experience, regardless of how many times the item is laundered.

Strategic Sourcing: Why Importers Choose Becozy for Multi-Tiered Portfolios

Building a successful bedding brand requires a diverse product line that addresses different price points and technological needs. [Becozy \(Qingdao Beikeqi Home Products Co., Ltd.\)](#) supports these global collaborations by offering both high-end PCM technology and competitive down-alternative solutions. The factory's ability to scale production while maintaining rigorous safety standards—such as zero

fluorescent agents—makes them a reliable partner for large-scale retailers.

By sourcing from a specialized Chinese supplier, importers can leverage the latest advancements in phase change materials and fiber modification. The company provides the technical documentation and visual assets necessary to communicate these complex benefits to the final consumer. This comprehensive service model ensures that the latest "intelligent" sleep technologies are accessible to a global audience. Whether a partner is targeting the luxury tech-sleep market or the high-volume all-season essentials market, the industrial capabilities of Becozy provide the necessary foundation for growth.

Conclusion: Redefining All-Season Comfort through Material Intelligence

The comparison between PCM and down-alternative materials reveals that the future of bedding lies in material intelligence. While down-alternatives provide the classic fluffy comfort many consumers love, PCM technology offers a futuristic solution to the problem of temperature fluctuation. Both materials have a distinct place in a modern bedding portfolio, provided they are manufactured with precision and care. By selecting a dedicated partner like Becozy, brands can ensure their products offer the perfect balance of breathability, lightness, and thermal regulation. As our understanding of sleep thermodynamics continues to improve, the role of specialized materials will remain the defining factor in high-performance rest.

For more information on all-season comforter solutions, visit: <https://cozytact.com/sy>.



Media Contact

Qingdao Beikeqi Home Products Co., Ltd.

*****@qdjoyful.com

East of Zhangjiafang Village, Cuijiaji Town, Pingdu City, Qingdao City, Shandong Province, China

<https://cozytact.com/sy>

Source : Qingdao Beikeqi Home Products Co., Ltd.

[See on IssueWire](#)