

# Elevating Industrial Standards: SWLABEL as a China Premium Self Adhesive Sticker Manufacturer



**Jiaxing, Zhejiang Jun 3, 2026 ([IssueWire.com](https://www.issuewire.com))** - The global industrial landscape currently demands a sophisticated balance between material durability and aesthetic precision. This evolution shifts the focus from basic product supply to the provision of comprehensive industrial-grade solutions. Within this competitive environment, [SWLABEL \(Zhejiang Shawei Digital Technology Co., Ltd.\)](https://www.issuewire.com) has emerged as a China Premium Self Adhesive Sticker Manufacturer that bridges the gap between traditional manufacturing reliability and modern digital versatility. By integrating advanced chemical engineering with precision coating technologies, the company sets new benchmarks for labeling performance across diverse sectors including logistics, pharmaceuticals, and high-end retail. The pursuit of excellence in this field requires a meticulous approach to substrate selection and adhesive chemistry to ensure long-term functionality.

## Two Decades of Manufacturing Excellence and Digital Evolution

The foundation of modern industrial labeling rests upon consistent quality and long-term field performance. With over 22 years of professional production and application experience, SWLABEL operates with a deep understanding of how label materials behave under various environmental stresses. This extensive tenure has allowed the organization to transition from a conventional producer into a technology-driven entity. Today, the manufacturing process incorporates a significant digital gene, specifically designed to support the latest generation of printing hardware. This transformation reflects a broader shift in the manufacturing sector toward highly specialized and responsive production cycles.

Innovation in this sector is no longer just about the substrate; it involves the seamless compatibility between the material and the ink delivery system. The core competitive products from this Zhejiang-based facility are engineered for UV Inkjet, Memjet, HP Indigo, and Laser printing technologies. This focus ensures that clients achieve efficient, colorful, and flexible results in an increasingly demanding market. By prioritizing these digital interfaces, the company enables businesses to maintain high-quality

visual branding while benefiting from the speed and customization offered by modern digital presses. Such technological integration is essential for brands that require rapid deployment of marketing assets across multiple global regions.

### [Comprehensive Product Matrix](#) and Industrial Specifications

A primary differentiator in the labeling industry is the ability to provide versatile physical formats that accommodate both massive industrial runs and boutique experimental batches. The production capabilities at SWLABEL are structured into a comprehensive matrix designed for high-performance reliability:

- **Scalable Format Versatility**

The manufacturing infrastructure supports a full spectrum of delivery formats. This includes massive jumbo rolls for high-speed industrial application, mini rolls for localized use, and individual sheets in A3 or A4 sizes. This logistical flexibility ensures that the needs of large-scale automated labeling lines are met alongside those of smaller, personalized projects. The capacity to switch between these formats allows for a more agile response to market fluctuations and specific client requirements.

- **Extensive Thickness Graduation**

The technical depth of the product catalog is evidenced by an expansive thickness range spanning from 50 $\mu$ m to 450 $\mu$ m. This variety allows for precise application across all scenarios, from lightweight consumer packaging that requires flexibility to heavy-duty industrial identification where structural rigidity is paramount. Each increment in thickness is carefully controlled to ensure uniform performance across the entire surface area of the label material.

- **Specialized Material Engineering**

A notable example of this engineering precision is the 50 $\mu$ m glossy silver BOPP film. This specific material utilizes a hot-melt adhesive paired with a 60g glassine release liner to provide a waterproof, chemical-resistant finish. Such products demonstrate the capacity to withstand harsh environmental conditions while maintaining the visual integrity required for premium branding. The use of specialized liners ensures that the labels can be applied efficiently by high-speed machinery without the risk of tearing or adhesive seepage.

### **Technical Barriers and Adhesive Research Development**

Beyond the visible surface of a label lies a complex layer of adhesive science that determines the success of a labeling solution. The SWLABEL technical team does not merely source materials; they conduct rigorous research into diverse bonding agents. This includes the development of hot-melt, water-based, and solvent-based adhesives. Consequently, the product line offers specialized solutions such as permanent bonds, removable options, deep-freeze resistant coatings, and high-temperature tolerances. This internal research capability allows for the creation of bespoke solutions that address unique industrial challenges, such as labeling on oily surfaces or textured substrates.

Furthermore, these materials are optimized for a wide array of industrial printing methods beyond digital systems. Whether a project requires Flexography or Offset printing, the substrates are treated to ensure optimal ink adhesion and drying times. This cross-platform compatibility is essential for global supply chains that utilize different printing technologies across various geographical regions. By controlling the

chemistry of the adhesive and the primer, the manufacturer ensures that the label remains functional throughout the entire lifecycle of the product it identifies. The stability of the adhesive bond is tested under extreme conditions to guarantee that the information remains legible from the factory floor to the end consumer.

### **Strategic Application and Sector-Specific Solutions**

The versatility of self-adhesive technology finds application in sectors where precision is a non-negotiable requirement. In the pharmaceutical industry, for instance, labels must remain intact and readable through various sterilization processes and cold-chain logistics. Similarly, in the automotive and electronics sectors, labels must resist exposure to heat, friction, and chemical cleaners. The engineering protocols adopted by the manufacturer prioritize these specific stressors during the product development phase. This systematic approach ensures that every roll or sheet delivered meets the rigorous standards of international trade and safety certifications.

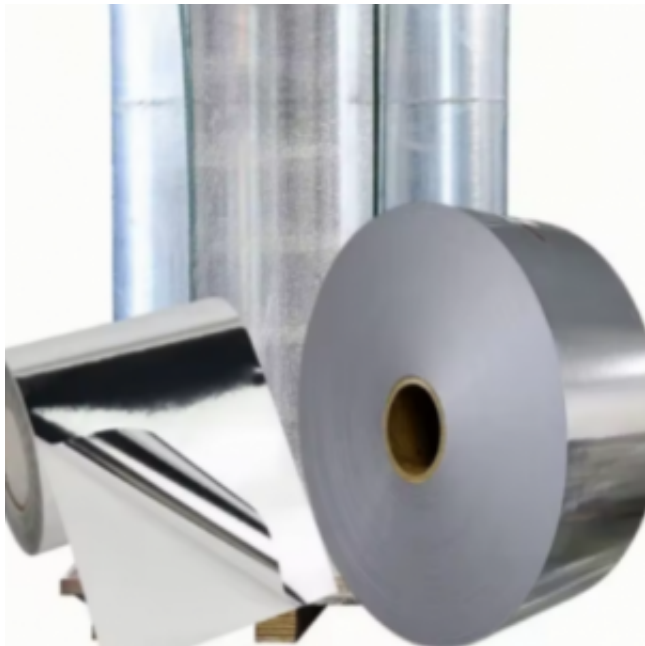
Moreover, the rise of e-commerce has necessitated labels that can survive the rigors of automated sorting and long-distance shipping. The friction and impact encountered during transit demand a substrate with high tear resistance and an adhesive that prevents edge-lifting. By addressing these practical challenges through continuous material innovation, the facility provides the necessary infrastructure for efficient global commerce. This dedication to solving real-world logistical problems positions the company as a vital partner in the supply chain rather than a simple commodity vendor.

### **Leading Industry Standards and Global Vision**

Technical leadership in the adhesive industry requires a commitment to ongoing education and the sharing of best practices. Through the analysis of complex processes like die-cutting and the application of cryogenic adhesives, the company contributes to the broader knowledge base of the labeling sector. These insights help partners understand the nuances of material selection, preventing common failures related to environmental exposure or mechanical stress during application. This role as a technical educator reinforces the brand's position as a leader in the Chinese manufacturing sector.

The corporate philosophy, "Serving all of China, going to the world," reflects an ambition to elevate the international perception of Chinese-made labels. By adhering to rigorous quality standards and investing in sustainable manufacturing practices, the organization aims to harmonize local production with global expectations. As industrial requirements continue to evolve toward smarter and more durable solutions, the focus remains on providing the technical infrastructure necessary for clear, lasting, and effective communication through labeling. The ongoing investment in R&D and digital manufacturing ensures that the organization remains at the forefront of the industry for years to come.

For more information regarding industrial labeling solutions and technical specifications, please visit: [www.zjswlabel.com](http://www.zjswlabel.com)



## Media Contact

Zhejiang Shawei Digital Technology Co.,Ltd

\*\*\*\*\*@shaweidigital.com

No.139,Lingfang road,Youchegang Town,Xiuzhou District,Jiaxing City,Zhejiang province, China.

<http://www.zjswlabel.com>

Source : Zhejiang Shawei Digital Technology Co.,Ltd

[See on IssueWire](#)