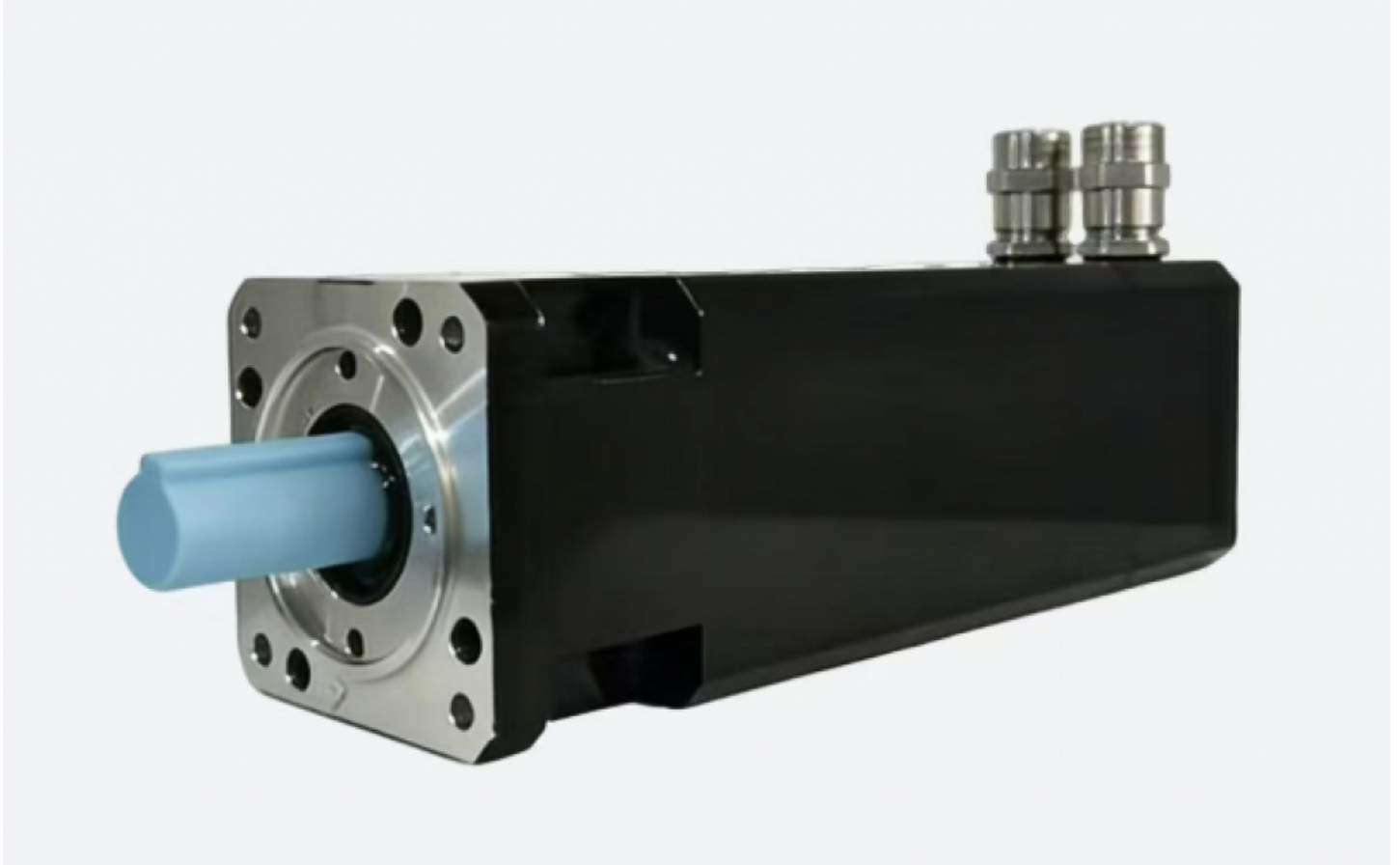


Security and Precision in Hazardous Environments: The Expertise of China Best Explosion-proof Servo Motor Manufacturer



Dongguan, Guangdong May 19, 2026 ([IssueWire.com](https://www.IssueWire.com)) - In industries where volatile gases, combustible dust, or flammable vapors are a constant presence, the margin for error is non-existent. Operations in sectors like petrochemical processing, mining, and specialized chemical manufacturing demand equipment that can deliver high-performance motion control without becoming a source of ignition. Navigating these hazardous environments requires a delicate balance of robust physical containment and high-speed operational accuracy. As a leading [China Best Explosion-proof Servo Motor Manufacturer](#), Wuhan Huada New Motor Technology Co., Ltd. (HXDWH) has spent decades engineering solutions that prioritize both security and precision, ensuring that industrial automation remains safe even under the most extreme atmospheric pressures and thermal risks.

I. Engineering for Volatile Atmospheres: The T4 and T5 Thermal Ratings

The primary threat in a hazardous environment is often invisible—temperature. When dealing with explosive substances, the "Auto-Ignition Temperature" (AIT) of the surrounding gas is the critical threshold. Standard motors generate significant heat through friction and electrical resistance, which can easily exceed the AIT of gases like ethylene or hydrogen.

Advanced explosion-proof servo motors, such as the 190-flange series, are designed with stringent thermal management systems to meet T4 and T5 ratings. A T4 rating ensures that the maximum surface temperature of the motor will not exceed 135°C, while a T5 rating keeps it below 100°C. This is achieved through high-grade insulation and optimized heat dissipation fins. In a chemical mixing plant, for instance, where ambient temperatures are already high, a T5-rated motor provides a necessary buffer of safety, ensuring that even during peak torque demands, the motor remains "cool" relative to the volatile chemicals in the room.

II. Precision Under Pressure: Power and Torque Dynamics

Safety is irrelevant if the motor cannot perform the required task. In hazardous environments, the tasks often involve heavy-duty lifting, precise valve positioning, or high-speed centrifugation. The technical specifications of modern explosion-proof units reflect a leap in power density.

Take, for example, the 190-flange explosion-proof servo motor line. These units operate on a 380V rating, delivering a power range from 2.9kW to 5.5kW. What sets these apart is the relationship between rated torque and speed. With rated torques ranging from 18.6Nm to 35Nm and speeds reaching up to 4000rpm, these motors provide the "muscle" needed for heavy industrial machinery while maintaining the "finesse" of a standard servo. This precision is vital in applications like pharmaceutical coating, where a slight deviation in speed could lead to friction-induced sparks or improper chemical bonding, both of which are catastrophic in a pressurized environment.

III. Structural Integrity: The 190 Flange and Mechanical Shielding

The physical build of an explosion-proof motor is its first line of defense. The "190-flange" designation refers to the mounting interface, but it also speaks to the industrial scale of the machine. These motors are built with flame-proof enclosures (often designated as "Ex d") that are capable of withstanding internal pressure without deforming.

In environments like offshore oil rigs or underground mines, equipment is subject to salt spray, high humidity, and physical impacts. The construction utilizes high-strength casting and precision-machined joints. These joints are engineered with a "flame path"—a microscopic gap that allows hot gases from an internal fault to cool down as they escape, ensuring that by the time they reach the outside air, they are below the ignition temperature of the external environment. This mechanical sophistication is why [Wuhan Huada New Motor Technology](#) (HXDWH) has remained a cornerstone of the industry for over 40 years, leveraging a 12,000 square meter production facility equipped with high-speed CNC lathes and specialized electrophoresis production lines to ensure every flange and seal meets exact tolerances.

IV. Cross-Sector Versatility: Adapting to Specialized Professional Fields

The versatility of explosion-proof servo technology allows it to be integrated into a wide array of specialized fields, each presenting unique atmospheric and mechanical challenges:

- **CNC Woodworking and Engraving:** In these settings, the air is often saturated with ultra-fine sawdust and combustible fibers. These particles create a high risk of dust explosions if they come into contact with electrical arcs. Modern explosion-proof servos utilize IP67-rated total sealing to prevent dust ingress, while their low-inertia design allows for the frequent start-stop cycles required for intricate patterns without internal heat buildup.
- **Welding and Cutting Machinery:** Operating in the presence of industrial gases like acetylene

or propane, these machines require motors that function with "cold operation" logic. By adhering to T4/T5 temperature classes, the motors ensure that the housing remains below the ignition point of leaked gases, even during continuous high-intensity welding cycles where electromagnetic interference is prevalent.

- **Packaging and Printing:** These environments are characterized by volatile organic compounds (VOCs) released from inks and adhesives. The "Ex d" flame-proof structure of the servo motor acts as a critical barrier; even if a fault ignites solvent vapors inside the motor, the explosion is contained, and any escaping gas is cooled through precision-machined joints to prevent secondary external ignition.
- **Glass and Hydraulic Machinery:** These fields demand resistance to extreme radiant heat and pressurized fluids. Explosion-proof servos in these sectors utilize specialized chemical-resistant seals to prevent hydraulic oil contamination and may feature integrated cooling systems to maintain torque stability during high-temperature glass forming processes.

V. Core Advantages and Sustained Reliability

A servo motor is only as intelligent as the drive controlling it. In hazardous zones, the motor often operates at a distance from the control cabinet. This requires high-performance drives, such as the SBF series or the $\Omega 6$ series, which can compensate for signal loss over long cable runs and provide real-time feedback on motor health.

The longevity of these products is a testament to their cost-effectiveness. With high stability and low customer complaint rates, these motors represent a long-term investment in both productivity and personnel safety. By combining the heritage of being China's earliest commercial AC servo manufacturer with modern testing instruments and multi-station stator production lines, HXDWH continues to push the boundaries of what is possible in "Danger Zones."

In conclusion, the evolution of explosion-proof technology is a journey from simple containment to intelligent prevention. As global standards for industrial safety become more stringent, the role of specialized manufacturers becomes even more critical. Security and precision are no longer competing interests; in the world of hazardous environment automation, they are two sides of the same coin.

For more technical details and product specifications, visit: <https://www.xulonggk.com/>



Media Contact

Xulong Technology(Dongguan)Co., Ltd.

*****@yeah.net

Source : Xulong Technology(Dongguan)Co., Ltd.

[See on IssueWire](#)