

Hebei Ximai Machinery (XMJX): A Comprehensive Construction Engineering Equipment Supplier



Hebei, China May 18, 2026 (Issuewire.com) - Hebei Ximai Machinery (XMJX): A Comprehensive Construction Engineering Equipment Supplier

In the grand theater of global development, where skyscrapers pierce the clouds and high-speed rails stitch continents together, the silent pulse behind every breakthrough is the machinery that makes it possible. As the world stands on the precipice of a new era of infrastructure—one defined by sustainability, extreme durability, and rapid urbanization—one name has consistently risen to the challenge: **Hebei Ximai Machinery Manufacturing Co., Ltd. (XMJX)**.

Today, XMJX is celebrated as [A Comprehensive Construction Engineering Equipment Supplier](#), a title earned through 20 years of "intensive development" and a relentless pursuit of engineering perfection. From the dust-choked mines of South America to the sophisticated industrial plants of Southeast Asia, XMJX is not just selling machines; it is delivering the literal foundation of modern progress.

The X-Factor: Two Decades of Industrial Evolution

The story of XMJX, which began in 1995, is a testament to the power of vertical integration. In an industry where many suppliers act as mere middlemen, [Hebei Ximai](#) has taken the harder, more rewarding path: integrating Research & Development (R&D), independent large-scale manufacturing, and a global service network under one roof.

Operating out of a massive **94,600-square-meter production base**, the company has moved far beyond simple assembly. It has cultivated an ecosystem of expertise, employing over 350 specialized staff members. This includes a "brain trust" of 13 senior engineers and 27 R&D and quality control professionals who ensure that every bolt, hydraulic pump, and steel plate meets the rigorous demands

of the modern job site. This historical depth allows XMJX to understand the evolution of construction needs—from the manual-heavy processes of the 90s to the high-precision, automated requirements of the 2026s.

The Anatomy of Strength: 13 Workshops of Precision

Quality is never an accident; it is the result of a high-standard manufacturing process. XMJX's production strength is anchored by **13 standardized production workshops**, each dedicated to a critical stage of the machinery lifecycle. This full-process internal control is what sets XMJX apart in the global market.

The Mastery of Metallurgy: Utilizing **ultra-high frequency heat treatment equipment**, XMJX transforms raw steel into components that can withstand the crushing pressures of heavy-duty excavation.

Precision in Motion: High-precision hydraulic presses and large-scale CNC milling machines ensure that mechanical tolerances are kept to a microscopic level. This precision translates directly to "on-site stability," reducing the vibration and wear that typically plague lower-tier machinery.

The Art of the Weld: With **automatic low-temperature welding equipment**, the structural integrity of XMJX's concrete placers and batching plants is guaranteed. These machines are built to survive the thermal expansion and contraction of extreme climates, whether in the freezing tundras or scorching deserts.

Corrosion Resistance: Every machine undergoes a rigorous rust removal and painting process, ensuring that the "XMJX Yellow" remains a symbol of reliability even after years of exposure to corrosive industrial environments.

The Power Trio: Earthmoving, Concrete, and Beyond

As a **comprehensive construction engineering equipment supplier**, XMJX has curated a product portfolio that addresses the "pain points" of modern contractors. Their offerings are categorized into three high-impact sectors:

I. Earthmoving Dominance: Caterpillar Excavators & Rollers

In partnership with global standards, XMJX provides high-performance **Caterpillar Excavators and Rollers**. These machines are the "first responders" of any construction site. Whether it is a mining operation requiring the removal of thousands of tons of overburden or a road construction project needing precision leveling, these units provide the raw torque and fuel efficiency required to keep operational costs low.

II. The Concrete King: From Batching to Placing

Concrete is the most consumed man-made material on Earth, and XMJX has mastered its delivery.

Concrete Batching Plants: Designed for high-volume output with computerized precision, ensuring the chemical consistency of every cubic meter.

Concrete Mixers: Built for durability, these units handle the most abrasive aggregates without

flinching.

Concrete Placers: This is where XMJX truly shines. Their placers allow for the surgical delivery of concrete into high-rise structures and complex bridge frameworks, significantly reducing labor costs and increasing safety.

III. The Lifeblood: Spare Parts and Accessories

A machine is only as good as its uptime. XMJX maintains a massive inventory of **engineering accessories and spare parts**. By controlling the manufacturing of these parts, they ensure that replacements are perfectly compatible, extending the total lifecycle of the equipment and protecting the customer's investment.

Navigating the Future: Industry Trends and the XMJX Response

The construction machinery industry is currently undergoing a seismic shift. Three major trends are defining the 2026, and XMJX is at the forefront of each:

- **The "Green" Infrastructure Wave** Global initiatives like the European Green Deal and various "Green Silk Road" projects demand equipment that is more efficient and produces fewer emissions. XMJX's R&D team is constantly optimizing hydraulic systems to ensure that their machines deliver maximum power with minimum fuel consumption.
- **The Rise of Modular Construction** As residential and industrial construction shifts toward pre-fabricated and modular designs, the need for precise **Concrete Batching Plants and Placers** has skyrocketed. XMJX equipment is designed to meet the exact specifications required for high-strength, pre-cast concrete components.
- **Digitalization and Remote Monitoring** The modern foreman wants to monitor their fleet from a tablet. XMJX is integrating smarter sensors into their machinery, allowing for predictive maintenance—identifying a potential part failure before it causes a site shutdown.

Where the Metal Meets the Mud: Real-World Applications

The true value of XMJX's status as a **comprehensive construction engineering equipment supplier** is seen in its diverse application scenarios:

Mining & Quarrying: In the harsh environments of open-pit mines, XMJX's heavy-duty excavators and spare parts keep the ore moving 24/7.

Urban Infrastructure: In the heart of growing metropolises like Dubai, XMJX concrete placers are essential for the vertical growth of the city skyline.

Road and Bridge Engineering: From the foundation-laying rollers to the bridge-casting batching plants, XMJX provides the end-to-end equipment needed to connect nations.

Industrial Plants: Large-scale factories require specialized flooring and structural pours, a task perfectly suited for XMJX's high-precision concrete mixers.

"Global Heart, Local Touch": The XMJX Service Philosophy

Exporting to over **80 countries and regions** since 1995 isn't just about shipping crates; it's about building relationships. XMJX's "Global Layout & Service" system is built on three pillars:

Pre-Sales Consultation: They don't just sell you a machine; they help you engineer a solution. Their technical professionals analyze your project parameters to recommend the most cost-effective fleet.

In-Sales Follow-Up: With flexible payment terms and a commitment to on-time delivery, XMJX removes the stress from international procurement.

After-Sales Maintenance: A dedicated team of 60+ global service personnel ensures that no matter where an XMJX machine is working, expert help is only a phone call or a flight away.

Customization: Your Brand, Our Backbone

One of the most compelling reasons global partners choose XMJX is their **OEM/ODM Customization** service. For large contractors or regional distributors, the ability to have equipment tailored to specific technical parameters—or even branded with their own logo—is a significant competitive advantage. XMJX provides:

Functional Customization: Adjusting machine power or reach for specific geographic needs.

Aesthetic Branding: Custom colors, logos, and identification systems.

Sample Order Service: A "trust-but-verify" approach where clients can test a single unit's adaptability before committing to a fleet-wide rollout.

An Open Invitation to Global Partners

The phrase "Seeing is Believing" holds a special place at XMJX. The company actively encourages a **Factory Visit** policy. They invite global partners to visit their Hebei production base to witness the 13 workshops in action, meet the senior engineers, and feel the weight of the steel that goes into every product.

In an era of uncertainty, XMJX offers a rare commodity: **Stability**. They offer the stability of 20 years of experience, the stability of a 94,600-square-meter facility, and the stability of a "Quality First" philosophy.

As the world continues to build, XMJX will be there—providing the tools, the parts, and the expertise to ensure that the infrastructure of tomorrow is even stronger than the foundations of today.

Get In Touch with the Experts

Ready to elevate your construction capabilities? Connect with a **comprehensive construction engineering equipment supplier** that understands your needs from the ground up.

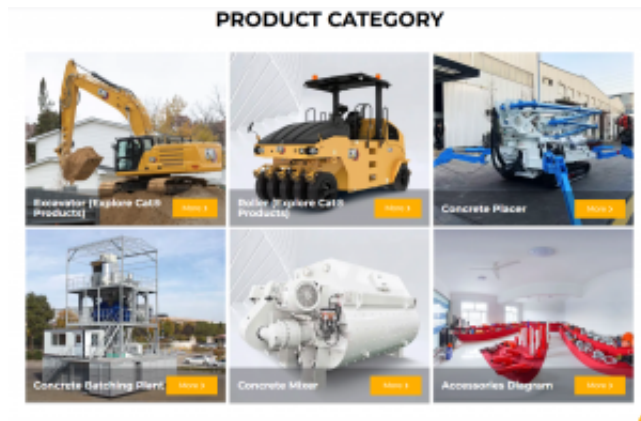
Official Website: <https://www.ximai-group.com/>

Address: No.7-5, Fengshou Rd., Shijiazhuang E&T Dev. Zone, Gaocheng Dist., Shijiazhuang City, Hebei Prov., P.R.China

Phone: +86 18931182796

Email: marketing@ximai.group

XMJX: Engineering the Future, One Machine at a Time.



Media Contact

Hebei Ximai Machinery Manufacturing Co., Ltd.

*****@ximai.group

+86 18931182796

o.7-5, Fengshou Rd., Shijiazhuang E&T Dev. Zone, Gaocheng Dist., Shijiazhuang City, Hebei Prov., P.R.Chin

<https://www.ximai-group.com/>

Source : Hebei Ximai Machinery Manufacturing Co., Ltd.

[See on IssueWire](#)