

Global Leaders in Textile Innovation: Top 10 High-Efficiency Cutting Table Manufacturers



Textiles and Clothing

Hangzhou, Zhejiang May 6, 2026 ([Issuewire.com](https://www.issuewire.com)) - The industry recognizes a select group of [Top 10 Factories for High-Efficiency Textile Cutting Tables in the World](#) that are setting new benchmarks for productivity. Among these leaders, Hangzhou IECHO Science & Technology Co., Ltd. (IECHO) stands out as a pivotal force. Established as a comprehensive supplier of intelligent cutting solutions for the non-metal industry, IECHO has integrated research, development, and massive manufacturing capabilities—exceeding 60,000 square meters—to empower textile enterprises in their transition toward Industry 4.0.

I. The Evolution of Innovation: From Physical Templates to Digital Twins

The most significant innovation in textile cutting lies in the shift from "analog-driven" physical templates to "algorithm-driven" digital systems. Traditionally, production relied on physical paper or plastic patterns that required manual tracing onto fabric layers. This method was inherently flawed: templates would warp or wear down over time, manual chalk lines introduced thickness variations, and hand-held cutting tools struggled with material shifting. These cumulative errors often resulted in dimensional deviations of several millimeters, necessitating large warehouses just to store thousands of bulky physical patterns.

Modern innovation has replaced this clumsy middleman with a "Digital Twin" philosophy. Today, patterns exist as high-precision vector data, allowing for a direct mapping from digital design to the blade's edge. Instead of human workers "guessing" the best fit, intelligent nesting algorithms calculate

thousands of layout permutations in milliseconds to achieve zero-gap cutting. This transition eliminates the "translation error" between a designer's vision and the final product. By utilizing vacuum adsorption technology to "solidify" flexible textiles under high pressure, these systems treat fabric with the stability of a rigid board, ensuring that the millionth cut is identical to the first. This leap from manual alignment to precise coordinate-based motion control is the cornerstone of the modern textile revolution.

II. Redefining High-Efficiency Through Mechanical Excellence

When evaluating what makes a cutting table "high-efficiency," several technical parameters differentiate market leaders from standard equipment. The primary metric is the balance between maximum cutting speed and the maintenance of structural integrity under high-frequency operation.

Take, for instance, the GLSC Automatic Multi-layer Cutting System. While many machines on the market struggle with vibration at high speeds, leading-edge models employ a one-time molding steel frame. By using large five-axis gantry milling machines to create the fuselage, manufacturers ensure that the equipment maintains stable precision even after years of high-speed operation.

Efficiency is also realized through the "Cutting While Feeding" function. Traditionally, a machine would stop to load new fabric and then restart the cutting process. Modern high-efficiency systems synchronize the feeding and cutting movements, increasing overall efficiency by more than 30%. This seamless transition reduces "dead time" on the factory floor, allowing for a continuous workflow that is essential for high-volume production environments.

III. Intelligent Systems and Technical Breakthroughs

The distinction between a standard factory and a global leader often rests on proprietary technical breakthroughs. For [IECHO](#), the focus has been on the "brain" of the machine—the motion control system.

- **Intelligent Sharpening Systems:** One of the most common bottlenecks in textile cutting is blade wear. High-efficiency tables now feature Swiss-imported high-speed sharpening motors that automatically adjust the sharpening speed and pressure according to the specific requirements of the fabric. This ensures the blade remains sharp for a longer duration, reducing downtime for blade changes.
- **Vacuum Chamber Optimization:** Efficiency is also a matter of energy consumption. New vacuum chamber designs have significantly improved structural rigidity, allowing for consistent suction force (up to 35 kPa) while reducing the machine's overall footprint by 20% to 30%. This allows factories to install more units within the same floor space, directly boosting output per square meter.
- **High-Frequency Oscillating Tools:** To handle dense or multi-layer materials, the industry has turned to high-frequency vibration technology. With rotating speeds reaching 6,000 rpm, these tools can slice through up to 90mm of compressed fabric (after vacuum adsorption) without distorting the edges, a critical requirement for aerospace and automotive interiors.

IV. Global Impact and Industry Application

The application of these high-efficiency tables spans a vast array of industries. In the automotive sector, they are used for precision cutting of seat covers and airbags. In the outdoor goods industry, they handle heavy-duty canvas and composite materials for tents and gear. The versatility of modern systems allows a single machine to be reconfigured for different textiles through quick-change tool

systems, making them an asset for diverse manufacturing portfolios.

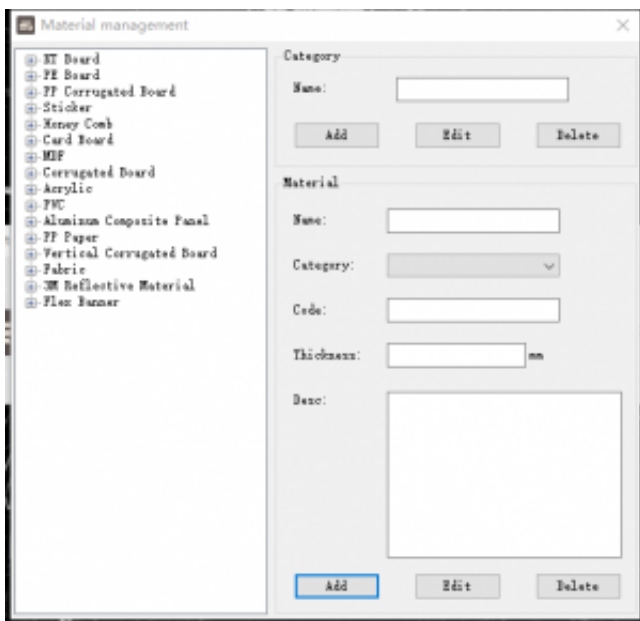
Furthermore, the integration of smart lines merging functions and automatic bit compensation ensures that even as tools wear down, the software adjusts the path to maintain sub-millimeter accuracy. This level of technical sophistication is why companies listed among the top global manufacturers continue to dominate the market; they provide not just a tool, but a comprehensive solution that addresses the entire production lifecycle.

V. Quality as the Cornerstone of Global Leadership

The transition of a company like IECHO from a domestic provider to a global player with products in over 100 countries is rooted in a rigorous quality control philosophy. Global leadership requires adherence to international standards for environment, occupational health, and safety management. By maintaining a 7 * 24 service network and a high ratio of R&D personnel (over 30% of the workforce), top-tier manufacturers ensure that their technological breakthroughs are backed by reliable field performance.

In conclusion, the era of high-efficiency textile cutting is defined by the synergy of robust mechanical hardware and intelligent software. As global demand for customized and rapidly produced textiles grows, the manufacturers who prioritize "one-time molding" durability, intelligent motion control, and continuous feeding technology will continue to lead the industry.

For more information on intelligent cutting solutions, visit: <https://www.iechocutter.com>



Media Contact

Hangzhou IECHO Science & Technology Co., Ltd.

*****@iechosoft.com

Source : Hangzhou IECHO Science & Technology Co., Ltd.

[See on IssueWire](#)