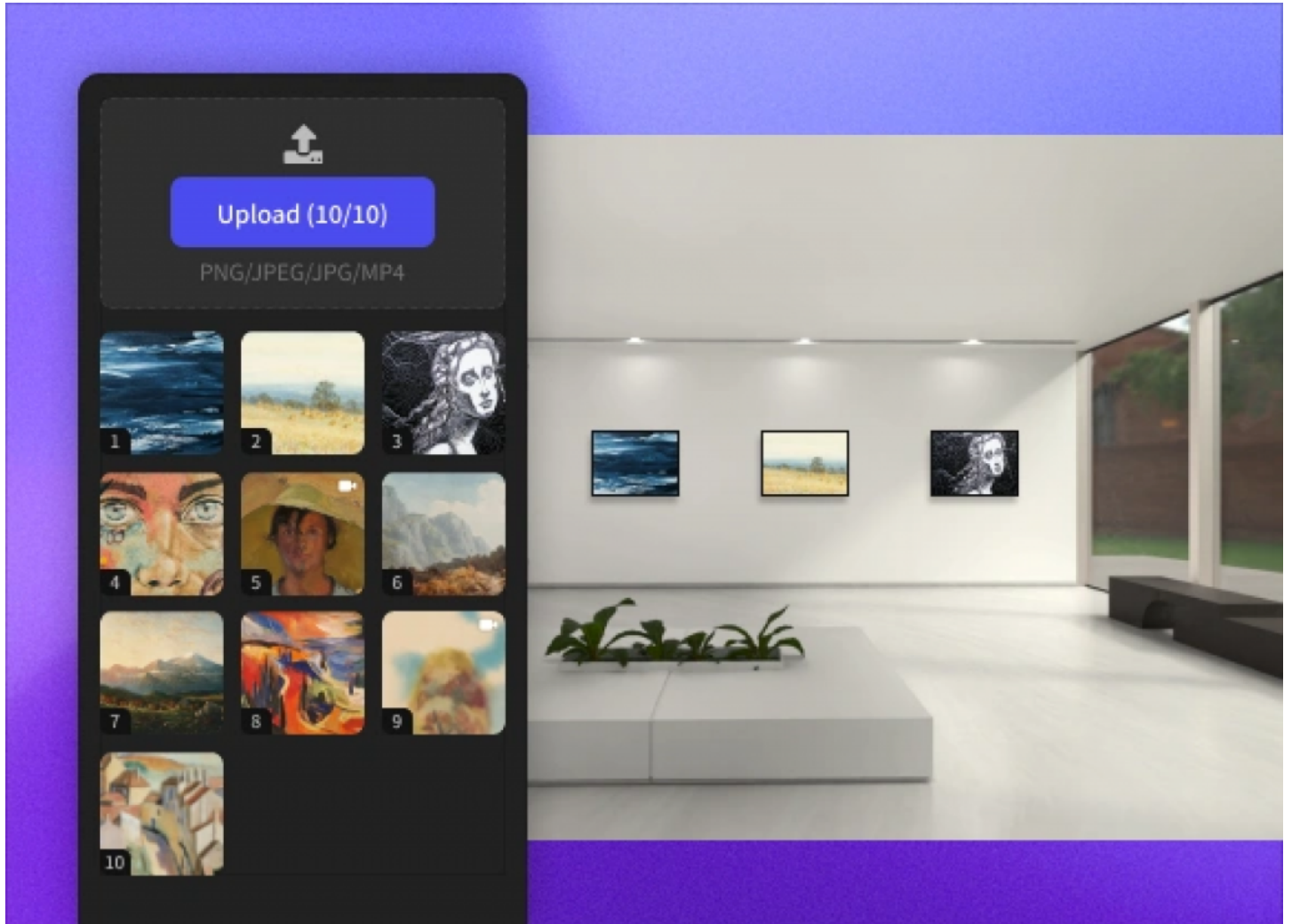


ExhVerse Launches a Digital Art Exhibition Platform for Immersive Online Showcases

ExhVerse introduces a creative platform that enables artists and curators to design immersive digital art exhibition spaces in three-dimensional environments.



Hong Kong, Hong Kong S.A.R. May 26, 2026 ([Issuewire.com](https://www.issuewire.com)) - ExhVerse approaches [digital art exhibitions](#) as curated journeys rather than static collections. The platform enables creators to arrange artworks within architected 3D spaces, guiding visitors through themed rooms and exhibition paths that mirror the experience of physical exhibitions.

This spatial framework allows digital art exhibitions built with ExhVerse to convey scale, atmosphere, and narrative flow—elements often lost in traditional online presentations. By organizing artworks in contextual environments, creators can enhance storytelling and audience connection.

ExhVerse removes technical barriers by providing an intuitive system for building digital art exhibition environments without the need for coding or specialized 3D design skills. This accessibility makes the platform suitable for independent artists, cultural institutions, and creative organizations alike.

Through interactive navigation and spatial exploration, ExhVerse increases engagement and time spent

within digital art exhibitions. These exhibitions can also function as components of larger virtual exhibitions and immersive online cultural programs.

“Digital art exhibitions deserve more than simple image grids,” said the ExhVerse team. “ExhVerse was built to help creators design immersive digital art exhibition experiences that communicate space, narrative, and artistic intent.”

As immersive digital experiences become an integral part of the creative economy, ExhVerse positions itself as a platform dedicated to the future of digital art exhibition design.

To learn more about ExhVerse and begin creating your own digital art exhibition, please visit [ExhVerse](#).

About ExhVerse

ExhVerse is a spatial digital exhibition creation platform that enables artists, curators, and institutions to build immersive digital art exhibitions and interactive virtual exhibitions. By combining three-dimensional environments with intuitive design tools, ExhVerse redefines how art is curated and experienced online.



Media Contact

ExhVerse Software Co., Ltd.

*****@fliphtml5.com

02061972665

Flat/Rm D3, 11/F, Luk Hop Industrial Building, No.8 Luk Hop Street, San Po Kong, Kowloon, Hong Kong

<https://exh.fliphtml5.com/>

Source : ExhVerse Software Co., Ltd.

[See on IssueWire](#)