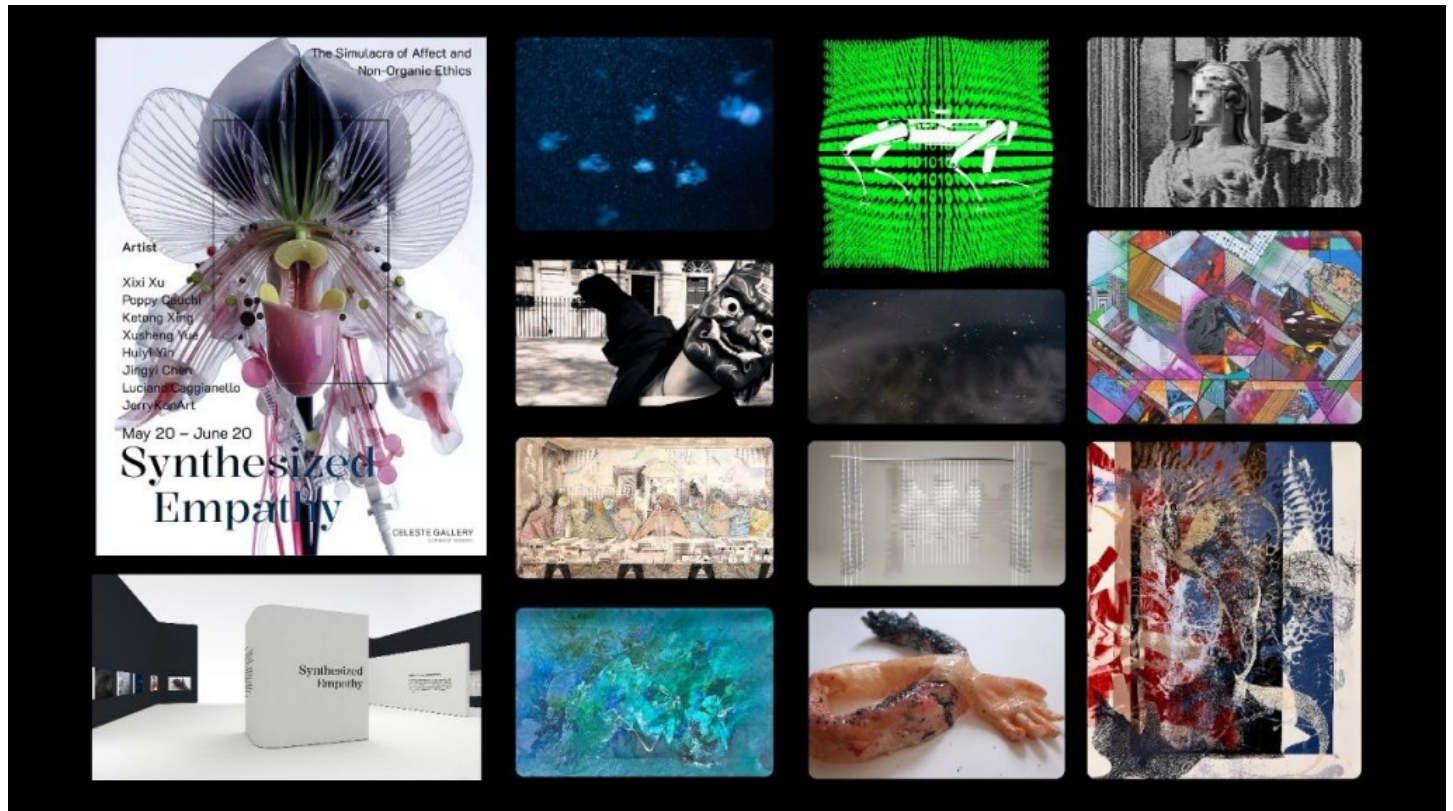


Celeste Gallery Presents “Synthesized Empathy,” an Online Exhibition Exploring AI and Human Emotion

Featuring eight international artists across photography, digital art, performance, and code-based practice, the exhibition examines the emotional frontier between humans and artificial intelligence.



London, United Kingdom May 24, 2026 ([IssueWire.com](https://www.issuewire.com)) - Celeste Gallery proudly presents Synthesized Empathy, an online collective exhibition exploring the increasingly blurred boundary between artificial intelligence and human emotion. Opening on 20 May 2026 and running through 20 June 2026, the exhibition brings together eight international artists across photography, digital art, mixed media, performance, textile video, and code-based practice through an immersive virtual gallery experience accessible worldwide.

At the center of Synthesized Empathy lies a timely and urgent question: can artificial intelligence truly feel, or does it merely simulate the appearance of emotion? As AI systems become increasingly capable of reproducing human expressions of grief, joy, intimacy, and desire, the exhibition invites audiences to confront the emotional ambiguity between authentic feeling and machine-generated simulation.

Curated by Celeste Gallery’s curatorial team, the exhibition unfolds as a four-part narrative journey exploring perception, memory, data, synthetic consciousness, and transformation. Through fragmented digital landscapes, abstract structures, immersive environments, and experimental visual language, the participating artists investigate how emotion is translated, performed, and reconstructed within technological systems.

The exhibition features works by JerryKanArt, Xixi Xu, Poppy Cauchi, Ketong Xing, Xusheng Yue, Jingyi Chen, Huiyi Yin, and Luciano Caggianello. Together, their works construct a compelling dialogue between the human body and the algorithmic mind, questioning whether empathy toward intelligent systems represents a moral evolution or a postmodern illusion.

Presented entirely online, Synthesized Empathy reflects Celeste Gallery's commitment to expanding global access to contemporary art while embracing digital space as both medium and message. The immersive 3D exhibition environment allows audiences worldwide to experience the works spatially and emotionally beyond the limitations of traditional gallery spaces.

"We are living through a moment when machines can simulate grief, perform desire, and replicate the micro expressions of joy," said curator Calista Chen. "Synthesized Empathy asks us to sit with the discomfort of that and to decide what it means for us as human beings."

Synthesized Empathy is on view from 20 May to 20 June 2026 and is free to access online at www.celestegallery.uk.

Media Contact:
Celeste Gallery
hello@celestegallery.uk
www.celestegallery.uk
Instagram: @celestegallerylondon



Media Contact

Synthesized Empathy

*****@celestegallery.uk

195-197 WOOD STR

[http:// www.celestegallery.uk](http://www.celestegallery.uk)

Source : Celeste Gallery

[See on IssueWire](#)