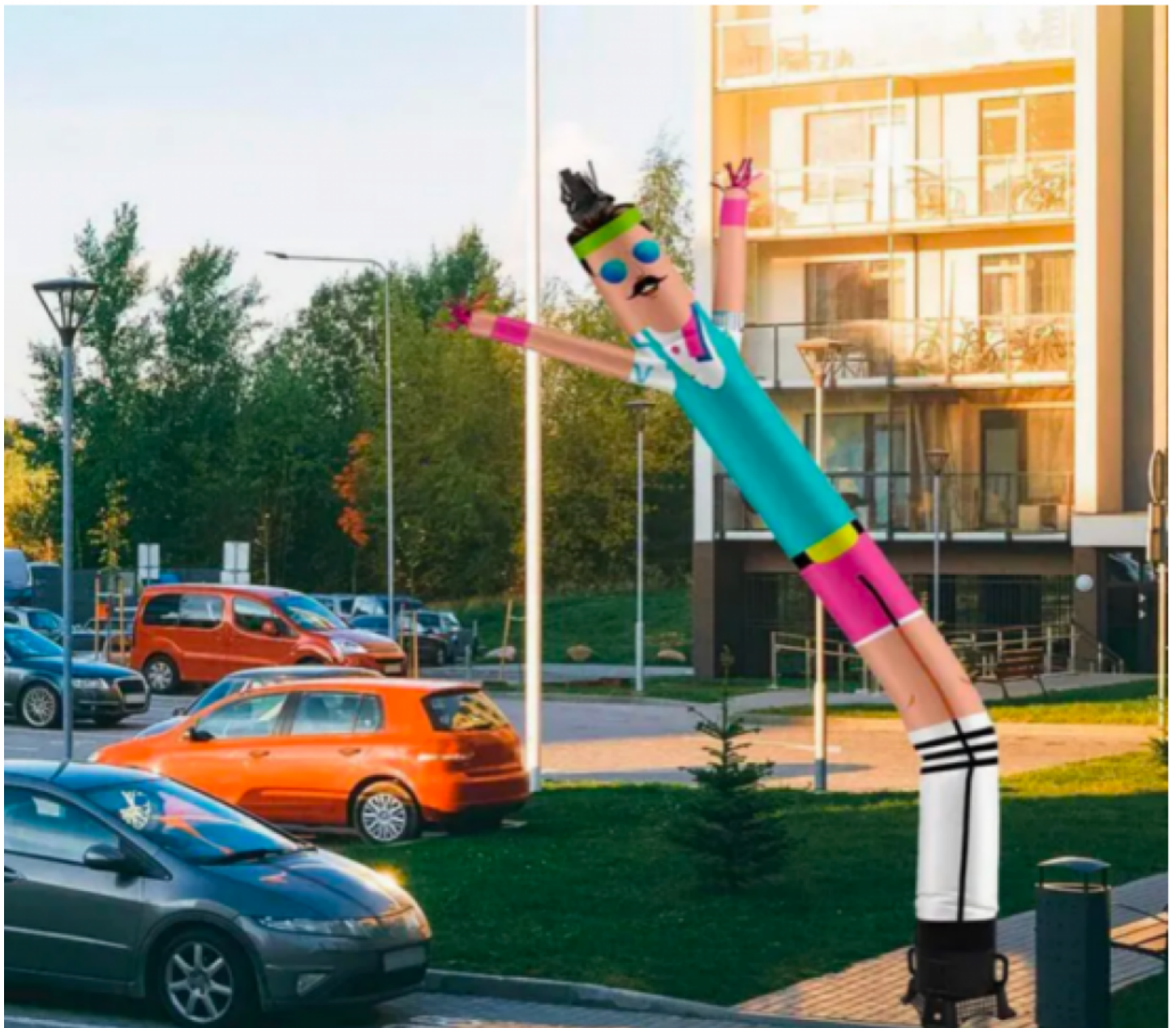


Zhengding Carnival Releases Professional Guide to Extending the Lifespan of Inflatable Advertising Models



Shijiazhuang, Hebei Apr 13, 2026 (Issuewire.com) - Zhengding Carnival Inflatable Model Co., Ltd., a leading global manufacturer specializing in the research, development, and precision production of pneumatic branding solutions, has announced the publication of an extensive technical guide. This initiative is designed to assist commercial enterprises in maximizing the operational efficiency and physical longevity of inflatable advertising models, commonly referred to as tube men or air dancers.

With over eight years of specialized production experience, Zhengding Carnival Inflatable Model Co., Ltd. has established a reputation for integrating high-tech equipment with rigorous quality management systems. The newly released protocols reflect the company's commitment to craftsmanship and its core

orientation toward creating long-term value for a global clientele. By adhering to standardized maintenance routines, business owners can protect their investments and ensure that their promotional displays continue to achieve value beyond initial expectations.

The Engineering of Kinetic Inflatables: Understanding the Need for Care

Professional inflatable models are sophisticated pieces of equipment engineered to convert high-volume airflow into rhythmic, eye-catching motion. This constant kinetic activity, while effective for capturing consumer attention, subjects the synthetic polymers and reinforced seams to continuous mechanical stress.

"The structural integrity of an inflatable display is a result of precise design and high-performance materials," stated a technical representative from Zhengding Carnival Inflatable Model Co., Ltd. "However, external environmental factors such as particulate friction, solar radiation, and fluctuating wind loads can accelerate the natural aging process of the fabric if not managed through a professional maintenance framework."

Detailed Protocol for Surface Decontamination and Cleaning

Contaminants such as industrial dust, sand, and organic debris are primary contributors to material fatigue. When these particles embed themselves within the fabric weave, they act as micro-abrasives. As the model moves, these particles erode the protective coatings and weaken the tensile strength of the seams.

Standardized Cleaning Steps:

Total Deflation and Layout: The model must be completely powered down and the air exhausted. It should be laid flat on a clean, non-abrasive surface, such as a heavy-duty industrial tarp, to prevent additional ground-level contamination during the cleaning process.

Solution Specifications: Industry standards dictate the use of pH-neutral detergents or mild soaps combined with lukewarm water. High-pressure washers are discouraged as they can force water through the fabric's protective barriers.

Chemical Restrictions: The application of harsh solvents, bleach, or ammonia-based cleaners is strictly prohibited. These substances can cause chemical breakdown in the PVC or nylon fibers, leading to premature brittleness and color fading.

Hydration Management: After a thorough rinse with clean water, the inflatable must be allowed to dry completely in a well-ventilated, shaded area. Moisture retention is a leading cause of microbial growth. Mold and mildew not only compromise the aesthetic appeal of the brand display but can also chemically digest the fabric fibers over time.

Technical Inspection and Structural Integrity Management

A proactive inspection schedule is essential for identifying minor structural compromises before they necessitate costly replacements. Zhengding Carnival Inflatable Model Co., Ltd. recommends a full inspection cycle after every 100 hours of operational use or following any significant weather event.

Key Inspection Points:

Seam Stress Zones: Particular attention should be paid to the junction where the vertical tube meets the blower attachment base. This area experiences the highest levels of vibration and pressure.

Perforation Detection: Users should scan for pinholes or micro-tears. Even a small hole can disrupt the internal pressure balance, causing the model to lean or lose its characteristic "dancing" rhythm.

Attachment Hardware: Inspect all Velcro straps, d-rings, and tether points for fraying or mechanical failure.

For minor punctures, the application of a specialized repair patch is a standard industry fix. The guide emphasizes that the repair site must be chemically de-greased and completely dry before the adhesive is applied. A 24-hour curing period is required to ensure the patch can withstand the operating pressure of the high-output blower units.

Blower Calibration and Airflow Dynamics

The performance of an inflatable model is inextricably linked to the efficiency of its blower unit. Zhengding Carnival Inflatable Model Co., Ltd. utilizes high-tech equipment to ensure that every model is calibrated to specific airflow requirements.

Using an incompatible blower can lead to two primary failure modes:

Over-Pressurization: A motor that provides excessive CFM (Cubic Feet per Minute) can place the seams under permanent tension beyond their design limits, leading to sudden catastrophic failure.

Under-Pressurization: Insufficient airflow prevents the model from reaching full extension, causing it to collapse under its own weight and increasing the friction between the fabric and the ground.

Monthly maintenance of the blower's intake filters is mandatory. A clogged filter forces the motor to operate at higher temperatures, increasing the risk of thermal shutdown and reducing the overall velocity of the air delivered to the inflatable.

Environmental Mitigation: Wind, Sun, and Atmosphere

While the products from Zhengding Carnival Inflatable Model Co., Ltd. are designed for the rigors of the global market, they are subject to the laws of atmospheric physics.

Wind Load Management: Aerodynamic stability is compromised when wind speeds exceed 25 miles per hour (approx. 40 km/h). In such conditions, the lateral force on the fabric can exceed the material's tear resistance. Professional operators are advised to monitor local meteorological data and decommission inflatables during high-wind warnings to prevent structural damage.

Ultraviolet (UV) Radiation Protection: Extended exposure to high-intensity sunlight can cause photodegradation. UV rays break down the molecular bonds in synthetic fabrics, leading to a loss of elasticity. To counter this, the company suggests:

Utilizing UV-resistant sprays formulated specifically for outdoor inflatables.

Strategic placement in areas that receive afternoon shade.

Avoiding permanent installation; inflatables should be rotated or stored when the business is not in operation to minimize cumulative UV exposure.

Strategic Storage and Warehouse Management

Improper storage is often cited as a major cause of shortened product lifespans. Zhengding Carnival Inflatable Model Co., Ltd. advocates for a "Fold, Don't Stuff" policy.

Storing an inflatable by stuffing it into a small container creates sharp creases. Over time, these creases become points of weakness where the fabric is likely to crack or peel. Instead, models should be loosely folded along their primary axis. Furthermore, storage environments should be temperature-controlled. Extreme heat can cause the material to become tacky and stick to itself, while extreme cold can make the fabric too rigid to unfold without damage.

To prevent damage from rodents or environmental pests, inflatables should be stored in durable, breathable containers on elevated shelving.

About Zhengding Carnival Inflatable Model Co., Ltd.

Zhengding Carnival Inflatable Model Co., Ltd. is a professional inflatable brand manufacturer integrating R&D, design, production, sales, and service. With a focus on precision manufacturing technology and a spirit of craftsmanship, the company strictly controls product quality to meet the diverse needs of the international market. By taking customer needs as the core orientation, Zhengding Carnival has created a professional, caring, and personalized service system aimed at helping customers achieve results that exceed their expectations.

The company's extensive product line includes specialized inflatable logos, advertising tube men, and custom shapes designed for high-impact visual marketing. For those seeking durable, high-performance inflatable solutions and professional technical support, more information is available on the official company website.

For further details on product specifications and maintenance best practices, please visit:
<https://www.inflatablelogo.com/>



Media Contact

Zhengding Carnival Inflatable Model Co., Ltd.

*****@gmail.com

<https://www.inflatablelogo.com/>

Source : Zhengding Carnival Inflatable Model Co., Ltd.

[See on IssueWire](#)