

Aurora Plumber Warns Homeowners of Sewer Line Risks as 1970s-Era Homes Reach Critical Age

Superior Mile High Plumbing alerts residents to spring snowmelt dangers as original plumbing systems in 50-year-old homes approach failure point across Aurora metro area.



Aurora, Colorado Apr 5, 2026 ([Issuewire.com](https://www.issuewire.com)) - Superior Mile High Plumbing, an Aurora-based plumbing service provider, is warning homeowners about increased sewer line failure risks as spring snowmelt and freeze-thaw cycles place stress on aging underground infrastructure. The alert comes as thousands of Aurora homes built during the city's rapid expansion in the 1970s and 1980s reach the 50-year mark with original plumbing systems still in place.

Aurora experienced its most dramatic population growth between 1970 and 1990, resulting in widespread residential construction during that period. Many homes from this era contain original clay or cast iron sewer lines that have now reached or exceeded their typical 40-50 year service life. Combined with Colorado's freeze-thaw cycles and spring snowmelt, these aging systems face heightened failure risk during the current season.

"Spring is when we see the highest number of emergency calls for sewer backups in Aurora," said Hector Frias-Chavarria of Superior Mile High Plumbing. "The ground thaws, old clay pipes that have been cracking for years finally give way, and homeowners end up with sewage in their basements. If your home was built in the '70s or '80s and you've never had your sewer line scoped, you're operating on borrowed time."

Superior Mile High Plumbing specializes in drain and sewer cleaning and repair, emergency plumbing services, and water heater repair and installation throughout the Denver metro area. The company reports that sewer line failures often occur without warning, though homeowners may notice signs

including slow drains throughout the house, gurgling toilets, sewage odors in the yard, or unusually lush patches of grass above sewer lines.

Spring snowmelt saturates soil around sewer lines, increasing pressure on compromised pipes and exposing existing cracks. Freeze-thaw cycles during late winter and early spring cause soil expansion and contraction that can shift or break aging pipes. Tree root intrusion, common in Aurora's mature neighborhoods, further compromises sewer line integrity as roots seek moisture and penetrate cracked joints.

The company emphasizes that sewer line camera inspections can identify problems before they result in catastrophic failures. Video inspection reveals pipe condition, root intrusion, offsets, and deterioration that may not yet cause symptoms but indicate imminent failure risk. Early detection allows homeowners to plan repairs or replacements on their timeline rather than during emergency situations.

Superior Mile High Plumbing operates with a focus on permanent solutions rather than temporary fixes, transparent pricing without hidden fees, and 24/7 emergency availability. The company is licensed and insured, with all work meeting local code requirements and professional standards specific to Colorado's plumbing challenges including frozen pipe risks and aging infrastructure.

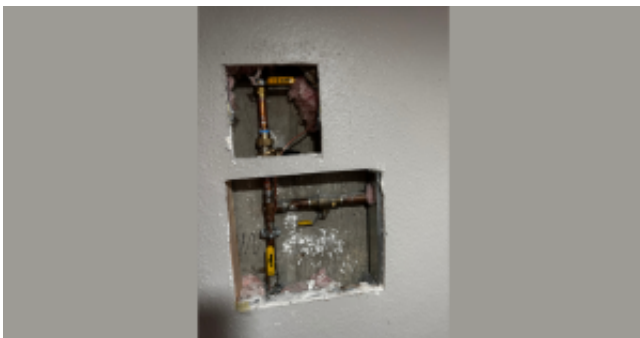
Homeowners in Aurora and surrounding Denver metro communities concerned about sewer line condition can schedule camera inspections or request emergency service by contacting Superior Mile High Plumbing at (303) 304-0784 or visiting superiormilehighplumbing.com.

About Superior Mile High Plumbing

Superior Mile High Plumbing provides residential plumbing services throughout Aurora and the Denver metropolitan area, specializing in drain and sewer repair, emergency plumbing, and water heater services. The company focuses on permanent solutions built for Colorado's unique plumbing challenges.

Contact:

Superior Mile High Plumbing
Aurora, CO
(303) 304-0784
<https://superiormilehighplumbing.com/>



Superior Mile High Plumbing

*****@gmail.com

(303) 304-0784

19169 E Nassau Dr, Aurora, CO 80013

<https://elefanteagency.com/>

Source : Superior Mile High Plumbing

[See on IssueWire](#)