

## ClearChange Aligners Opens Provider Enrolments to Dental Practices Across New Zealand and Australia

Locally manufactured aligner system expands provider network across New Zealand and Australia

The logo for ClearChange Aligners is displayed on a solid orange background. The word "Clear" is in a dark blue, sans-serif font. Below it, the word "Change" is also in a dark blue, sans-serif font, but the letter "a" is replaced by a stylized orange arch that spans the width of the "a" and extends slightly beyond its left and right sides.

**Lower Hutt, Wellington Mar 25, 2026** ([Issuewire.com](http://www.Issuewire.com)) - *New Zealand's locally manufactured clear aligner system invites dental practices to join its growing provider network*

ClearChange Aligners, a clear aligner system designed and manufactured in Wellington, New Zealand,

is now welcoming new dental practice enrolments across New Zealand and Australia.

The announcement is aimed at dental practices looking to introduce clear aligner therapy into their service offering, or those seeking a locally based alternative to overseas aligner providers.

### About ClearChange Aligners

ClearChange Aligners is produced by iDD Dental Lab, based in Wellington, New Zealand. The company was established with the aim of offering dental practices a locally manufactured aligner option, with the intention of supporting faster delivery logistics and direct communication between practices and the production team.

ClearChange aligners are designed to address a range of orthodontic presentations, including crowding, spacing, open bite, overbite, underbite, and crossbite. Treatment suitability for all cases is assessed by the treating dentist, and individual outcomes will vary depending on each patient's clinical circumstances.

### What Enrolled Providers Can Expect

Dental practices that enrol as [ClearChange Aligners](#) providers will have access to the following:

**Local Manufacturing and Delivery Support:** Aligners are produced at iDD Dental Lab in Wellington. Local production is intended to support reduced international shipping times compared to offshore manufacturing models, though individual delivery timeframes may vary.

**Competitive Local Pricing:** ClearChange's local production model is designed to support competitive pricing for dental practices. Practices are encouraged to review pricing details directly with the ClearChange team to assess suitability for their specific business model.

**Marketing Resources:** Enrolled providers receive complimentary marketing support, including a Starter Kit containing banners, flyers, and window stickers, along with ready-made social media content for Instagram and Facebook. Online advertising is created in collaboration with marketing specialists.

**Provider Directory Listing:** Enrolled practices are listed on the ClearChange provider directory, making it easier for patients in their area to locate a nearby provider.

**Universal Scanner Compatibility:** ClearChange accepts digital scans from major intraoral scanners including 3Shape, iTero, Medit, Dentsply, Carestream, and Planmeca, supporting integration into existing practice workflows.

### Two Treatment Options Available

ClearChange currently offers two orthodontic solutions for practices to offer their patients:

**Clear Aligners** — A removable, transparent aligner system for gradual tooth movement across a range of clinical presentations.

**Clear Braces** — A fixed, tooth-coloured orthodontic appliance for cases where a fixed treatment option may be clinically appropriate.

The treating dentist determines which option is suitable for each patient based on their individual clinical needs.

Enrolment Now Open

Dental practices in New Zealand and Australia interested in becoming a ClearChange provider are invited to get in touch directly to discuss the enrolment process, pricing, and support available.

Contact Information

### **ClearChange Aligners**

Address: 9 Hillary Court, Naenae, Lower Hutt 5011, New Zealand

Phone: 04 567 4752

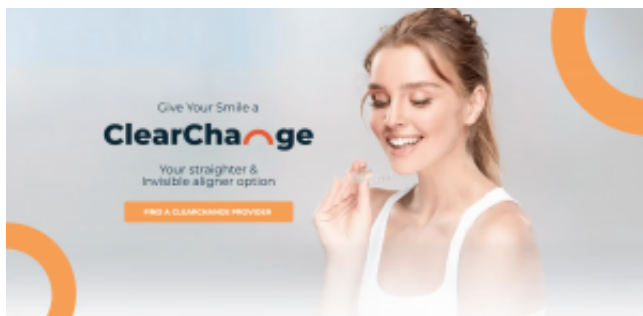
Email: [info@clearchangealigners.com](mailto:info@clearchangealigners.com)

Website: [www.clearchangealigners.com](http://www.clearchangealigners.com)

Instagram: <https://www.instagram.com/clearchangealigners>

Facebook: <https://www.facebook.com/clearchangealigners>

*ClearChange Aligners is produced by iDD Dental Lab in Wellington, New Zealand. Treatment outcomes vary depending on individual patient circumstances. All treatment suitability is determined by the treating dental professional.*



### **Media Contact**

ClearChange Aligners

\*\*\*\*\*@clearchangealigners.com

04 567 4752

9 Hillary Court, Naenae, Lower Hutt 5011, New Zealand

Source : ClearChange Aligners

[See on IssueWire](#)

