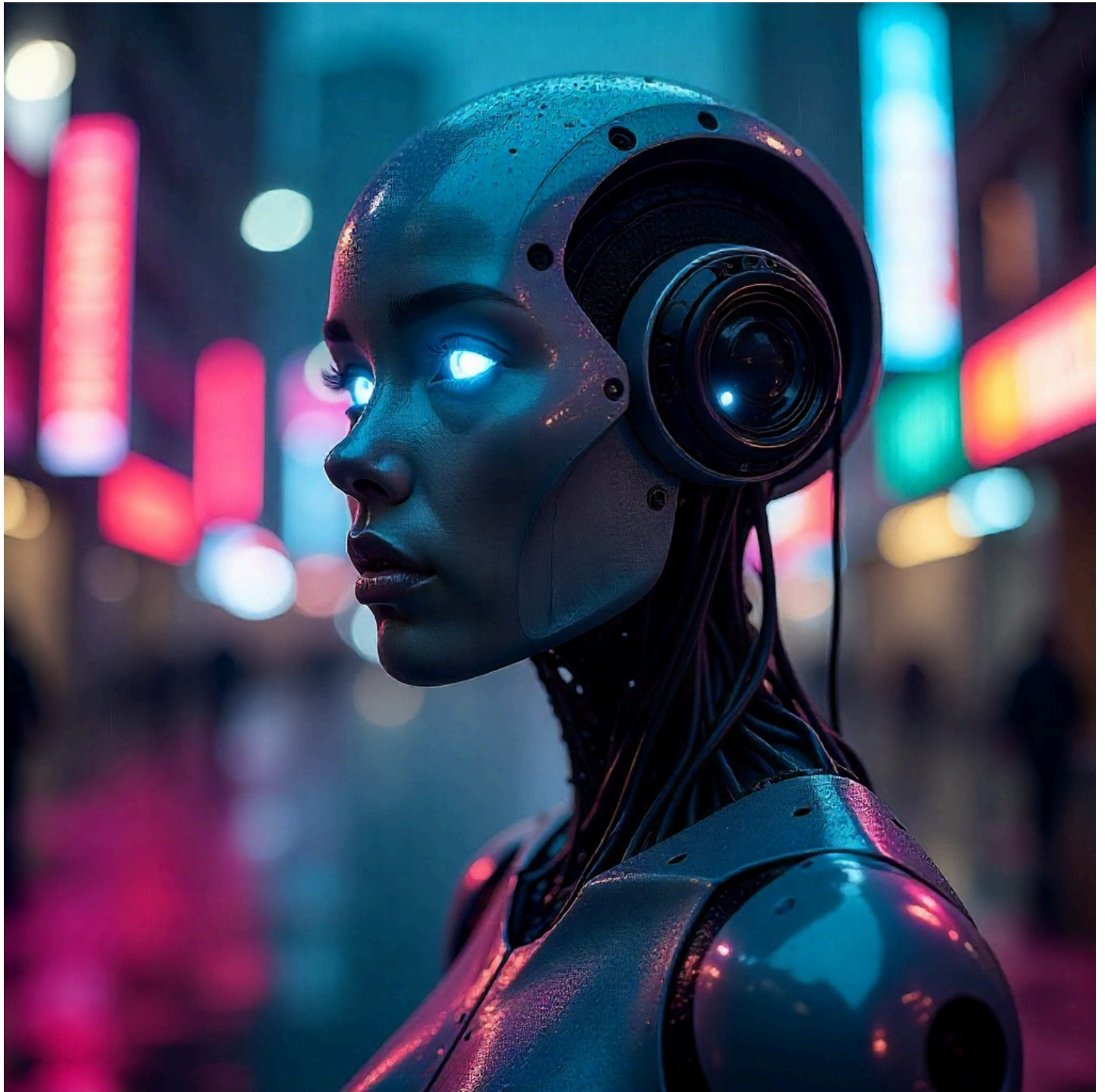


NSFWCoders Announces Advanced Candy AI Clone Development for Adult AI Platforms



New Square, New York Dec 26, 2025 ([IssueWire.com](https://www.IssueWire.com)) - NSFWCoders, a dedicated AI engineering studio specializing in adult-focused conversational systems, has announced an upgraded development suite for their Candy AI Clone, a high-performance AI companion and NSFW chatbot solution designed for creators, agencies, and startups entering the next era of AI-driven digital intimacy.

The company's [Candy AI Clone](#) framework delivers a scalable, fully customizable system that allows businesses to launch their own AI girlfriend platforms, NSFW chatbots, and adult companion applications without the need for deep AI research or in-house engineering teams. With the growing demand for personalized adult AI experiences, NSFWCoders aims to provide a robust, ready-to-deploy architecture that significantly reduces development time and operational costs.

The upgraded Candy AI Clone offers features such as:

- Real-time personality simulation
- Lifelike NSFW conversational capabilities
- Voice interaction support
- Image generation or roleplay mode (optional)
- API integration for websites and mobile apps
- Custom dataset training to match brand identity
- Support for multiple AI characters and multilingual chats
- Scalable backend for global traffic

Speaking about the launch, the NSFWCoders team said that the new development suite focuses on **privacy, personalization, and monetization**—three core demands of adult entertainment businesses building AI companion platforms. The system follows modern security protocols and allows business owners to integrate subscription models, pay-per-chat billing, and premium engagement features directly into their ecosystem.

Who Should Use the Candy AI Clone?

The solution is designed for:

- Entrepreneurs building AI girlfriend or AI companion apps
- Adult platforms wanting to introduce automated NSFW chat services
- Content creators who want to launch personalized AI versions of themselves
- Agencies offering white-label adult tech solutions
- Startups seeking rapid product deployment without a large development team

According to NSFWCoders, the Candy AI Clone has already attracted interest from international adult creators and early-stage founders looking to scale quickly by leveraging conversational AI instead of traditional content models. The platform's modular architecture lets businesses add or remove functionalities, train custom personalities, and deploy updates without downtime.

Key Advantages of NSFWCoders' Candy AI Clone:

- Faster time-to-market
- No technical expertise required
- High user engagement and retention rates
- Revenue-ready features built in
- End-to-end development and post-launch support

With AI rapidly reshaping the adult industry, [NSFWCoders](#) positions itself as a technology partner capable of delivering reliable, industry-specific AI systems that match the performance of top competitors—while remaining more affordable and easier to scale.

Businesses, creators, and startup founders interested in launching their own AI companion platform can

learn more or request a demo directly via the official page: Candy AI Clone by NSFWCoders.

Media Contact

NSFW Coders

*****@gmail.com

9292301231

455 Harborview Plaza, Suite 800

Source : NSFW Coders

[See on IssueWire](#)